

TAKE-OFF DISTANCE – FLAPS TAKEOFF

ASSOCIATED CONDITIONS:

POWER TAKE-OFF POWER SET
 BEFORE BRAKE RELEASE
 LANDING GEAR RETRACT AFTER LIFT-OFF
 RUNWAY PAVED, LEVEL, DRY SURFACE

NOTE: FOR OPERATION WITH ICE VANES EXTENDED
 ADD 5 °C TO THE ACTUAL OAT BEFORE
 ENTERING GRAPH.

WEIGHT - POUNDS	TAKE-OFF SPEED ~ KNOTS	
	V ₁	V ₂
16,600	108	115
16,000	107	114
14,000	102	112
12,000	102	112
10,000	102	112

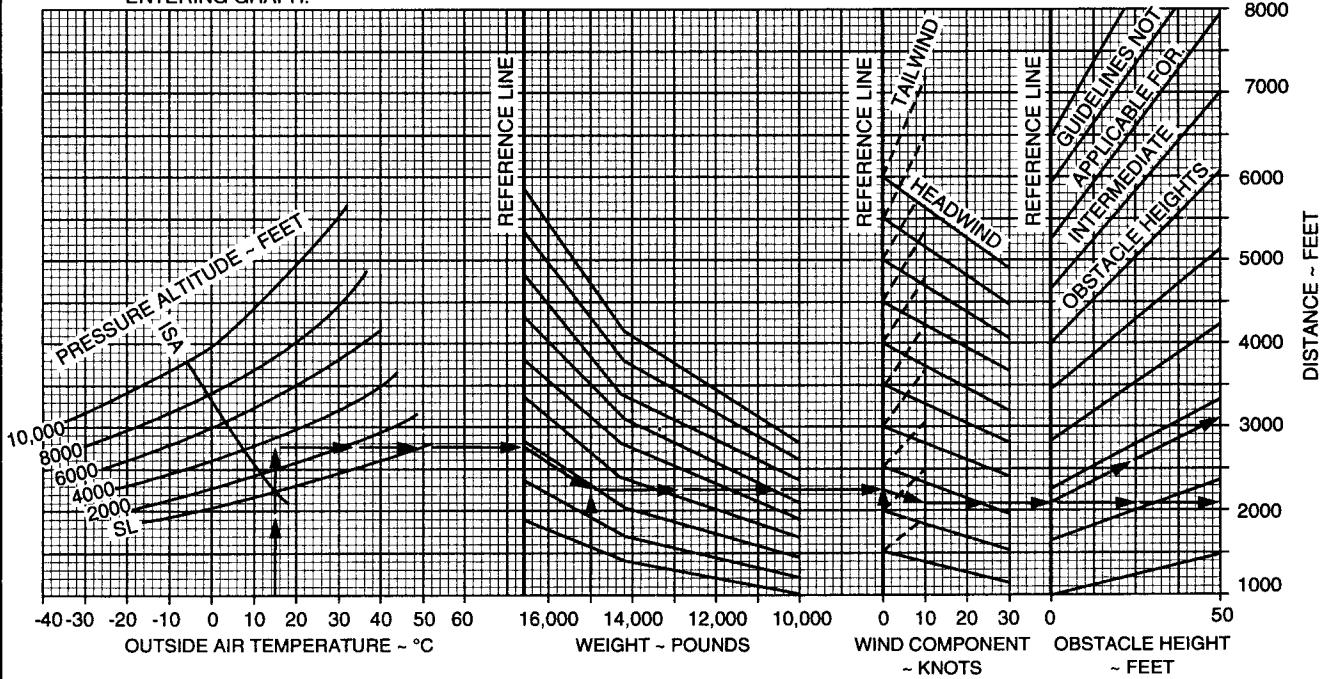


FIGURE 13.—Takeoff Distance – Flaps Takeoff.