

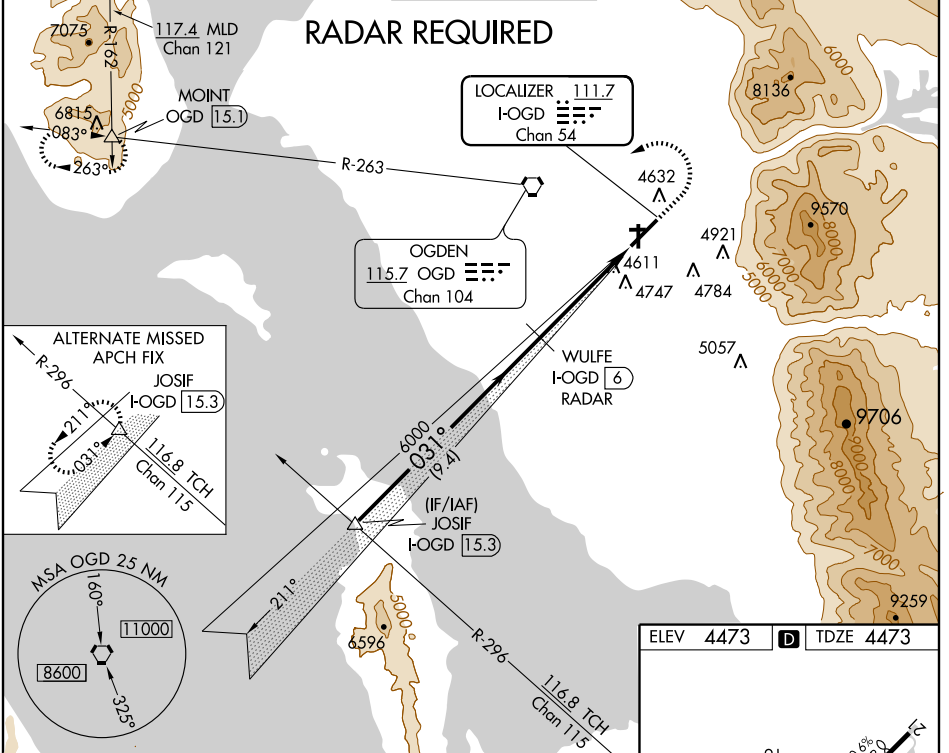
LOC/DME I-OGD 111.7 Chan 54	APP CRS 031°	Rwy Idg 7252 TDZE 4473 Apt Elev 4473
---	------------------------	---

ILS or LOC RWY 3

OGDEN-HINCKLEY (OGD)

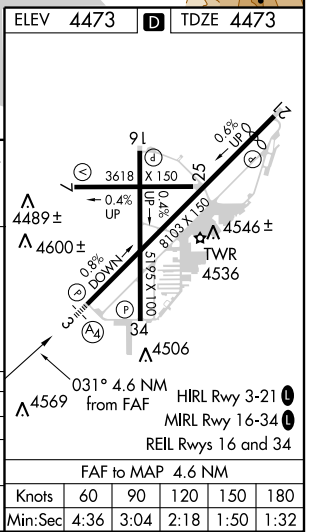
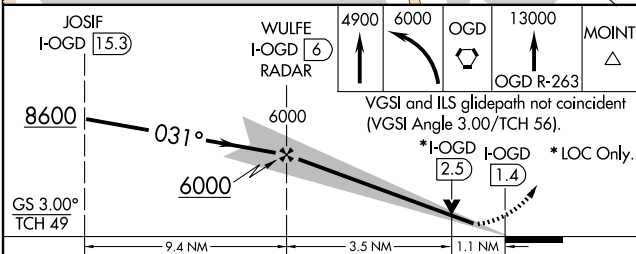
<p>⚠ When local altimeter setting not received, use Hill AFB altimeter setting. ⚠ When VGSi inoperative, circling Rwy 7 and 16 NA at night. Inoperative table does not apply to S-LOC 3 and Cat C. DME or RADAR required.</p>	<p>MALS (A) $\frac{111.7}{54}$</p>	<p>MISSED APPROACH: Climb to 4900, then climbing left turn to 6000 direct OGD VORTAC, then climb to 13000 on OGD R-263 to MOINT INT/OGD 15.1 DME and hold, continue climb-in-hold to 13000.</p>
--	--	---

ATIS 125.55	SALT LAKE CITY APP CON 121.1 319.25	OGDEN TOWER* 118.7 (CTAF) 253.5	GND CON 121.7	UNICOM 122.95
-----------------------	---	---	-------------------------	-------------------------



SW-4, 05 APR 2012 to 03 MAY 2012

SW-4, 05 APR 2012 to 03 MAY 2012



CATEGORY	A	B	C	D
S-ILS 3	4673-1/2 200 (200-1/2)			
S-LOC 3	4880-3/4 407 (500-3/4)	4880-1/4 407 (500-1/4)		
CIRCLING	4980-1 507 (600-1)	5060-1 587 (600-1)	5060-1/2 587 (600-1/2)	5100-2 627 (700-2)

OGDEN, UTAH
Amdt 4C 25AUG11

41°12'N-112°01'W

OGDEN-HINCKLEY (OGD)

ILS or LOC RWY 3

Figure 329