

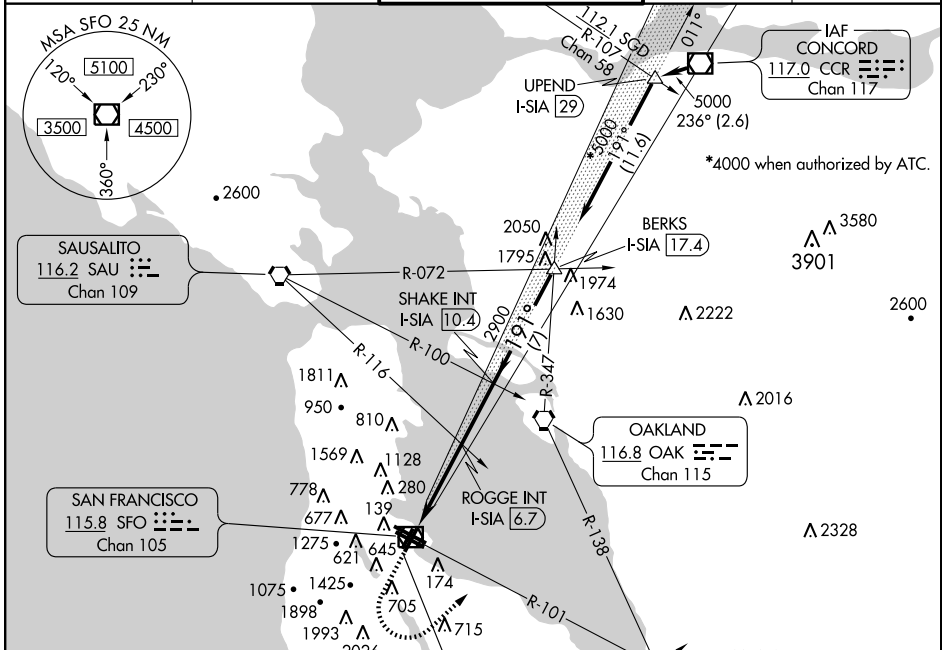
ILS or LOC RWY 19L

SAN FRANCISCO INTL (SFO)

LOC/DME I-SIA 108.9 Chan 26	APP CRS 191°	Rwy 19L Idg 8648 TDZE 11 Apt Elev 13	Rwy 19R Idg 7500 TDZE 10 Apt Elev 13
--	------------------------	---	---

⚠ Inoperative table does not apply. **MALSF Rwy 19L** MISSED APPROACH: Climb to 420 then climbing left turn to 4000 via SFO VOR/DME R-101 to DUMBA INT and hold.

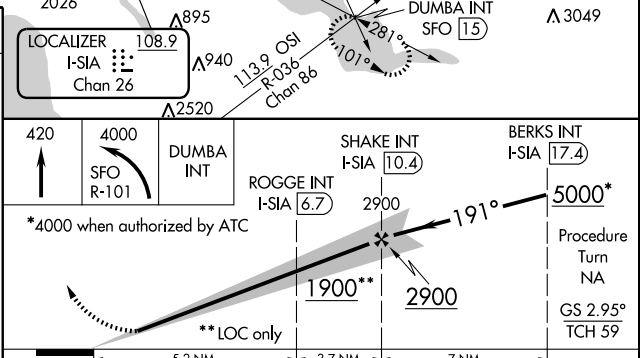
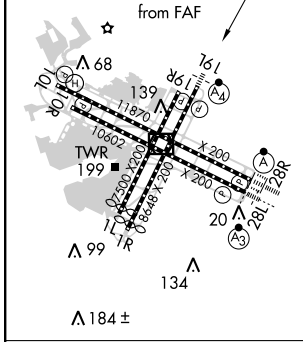
ATIS 113.7 115.8 118.85 135.45	NORCAL APP CON 134.5 338.2	SAN FRANCISCO TOWER 120.5 269.1	GND CON 121.8	CLNC DEL 118.2
--	--------------------------------------	---	-------------------------	--------------------------



SW-2, 05 APR 2012 to 03 MAY 2012

SW-2, 05 APR 2012 to 03 MAY 2012

ELEV 13	TDZE 19L 11
HIRL all Rwys	TDZE 19R 10
TDZ/CL Rwys 19L and 28R	
REIL Rwys 1L, 1R and 10L	



CATEGORY	A	B	C	D
S-ILS 19L		211/40	200 (200-¾)	
S-LOC 19L		340/50	329 (400-1)	
SIDESTEP RWY 19R	340/50	330 (400-1)	340-1½ 330 (400-1½)	340-2 330 (400-2)
CIRCLING	760-1¼ 747 (800-1¼)	940-1½ 927 (1000-1½)	1040-3 1027 (1100-3)	1160-3 1147 (1200-3)

FAF to MAP 8.2 NM

Knots	60	90	120	150	180
Min:Sec	8:12	5:28	4:06	3:17	2:44

Figure 330