

OAKLAND, CALIFORNIA

AL-294 (FAA)

LOC I-OAK <b>109.9</b>	APP CRS <b>276°</b>	Rwy Idg 5454 27R	27L 6213
		TDZE 7	9
		Apt Elev 9	9

# ILS or LOC/DME RWY 27R

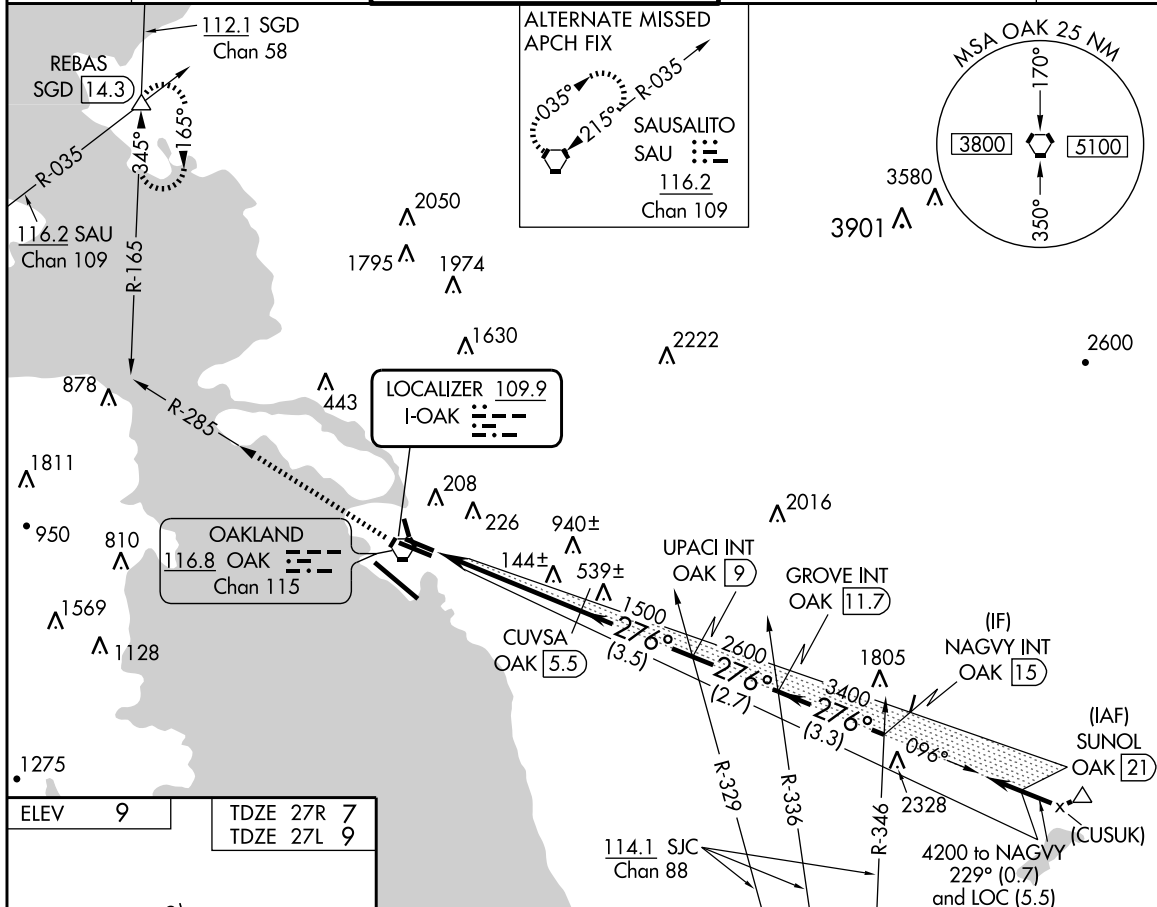
OAKLAND/METROPOLITAN OAKLAND INTL (OAK)

**▽** \*RVR 1800 authorized with the use of FD or AP or HUD to DA.

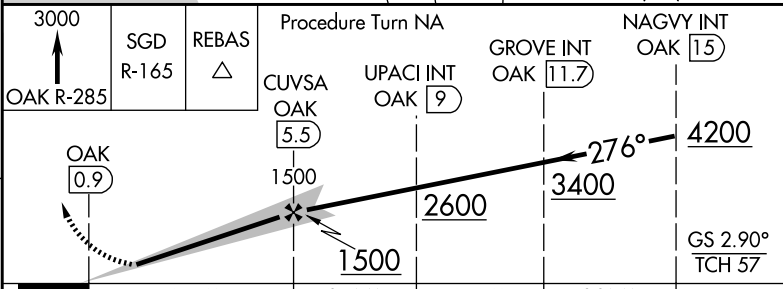
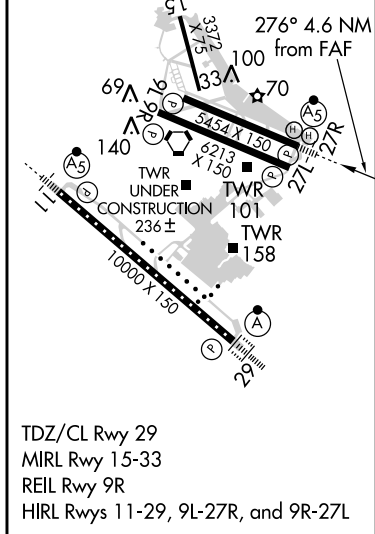
MALS Rwy 27R

MISSED APPROACH: Climb to 3000 via OAK R-285 to intercept SGD R-165 to REBAS INT/SGD 14.3 and hold.

ATIS <b>133.775</b>	NORCAL APP CON <b>125.35 310.8 354.1</b>	OAKLAND TOWER (Rwys 9-27, 15-33) (Rwy 11-29) <b>118.3 291.65 127.2 256.9</b>	GND CON (Rwys 9-27, 15-33) (Rwy 11-29) <b>121.9 121.75</b>	CLNC DEL <b>121.1</b>
------------------------	---	--	--	--------------------------



ELEV	9	TDZE 27R	7	TDZE 27L	9
------	---	----------	---	----------	---



CATEGORY	A	B	C	D
S-ILS 27R	*207/24 200 (200-½)			
S-LOC 27R	400/24 393 (400-½)			400/40 393 (400-¾)
SIDESTEP RWY 27L	420/50 411 (500-1)		420-1½ 411 (500-1½)	420-2 411 (500-2)
CIRCLING	520-1 511 (600-1)	540-1 531 (600-1)	540-1½ 531 (600-1½)	560-2 551 (600-2)

OAKLAND, CALIFORNIA  
Amdt 35A 11349

# ILS or LOC/DME RWY 27R

OAKLAND/METROPOLITAN OAKLAND INTL (OAK)

37°43'N-122°13'W

Figure 336. ILS or LOC/DME RWY 27R (OAK).