

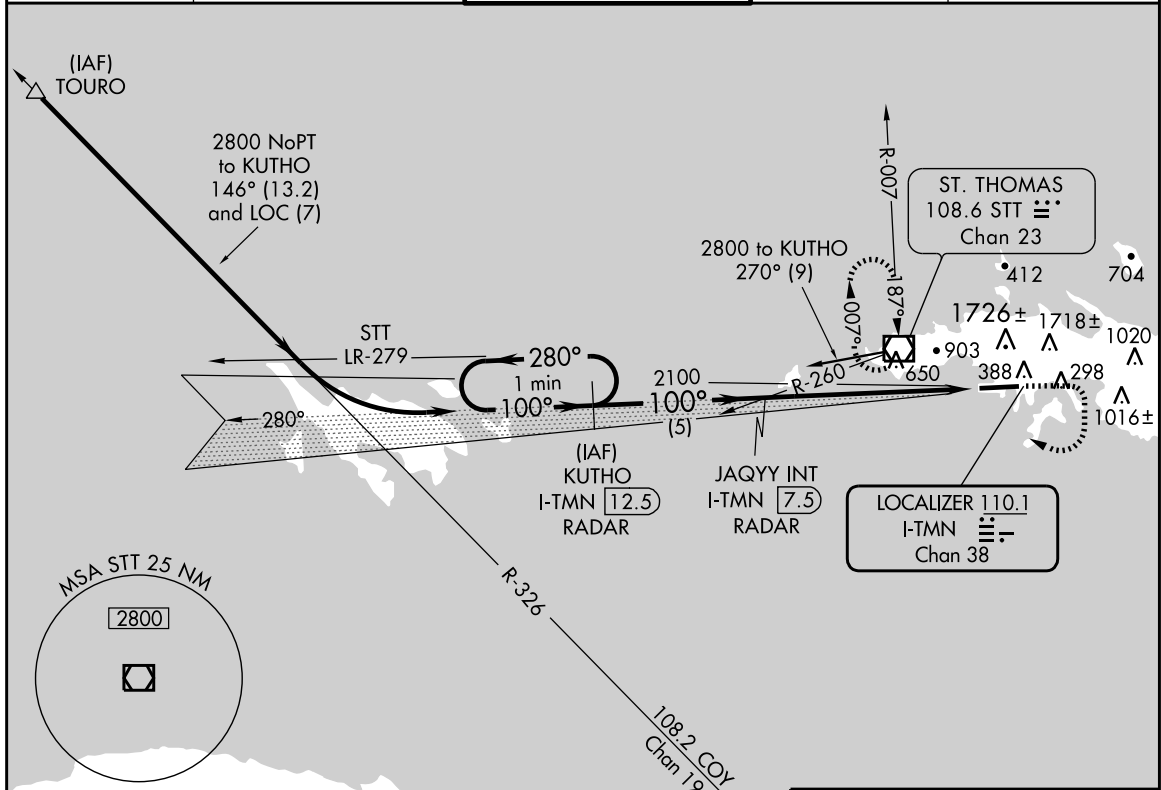
CHARLOTTE AMALIE, ST. THOMAS, VIRGIN ISLANDS AL-5005 (FAA)

LOC/DME I-TMN 110.1 Chan 38	APP CRS 100°	Rwy ldg 7000 TDZE 23 Apt Elev 23	ILS RWY 10 CHARLOTTE AMALIE/ CYRIL E KING (STT)(TIST)
---	------------------------	---	---

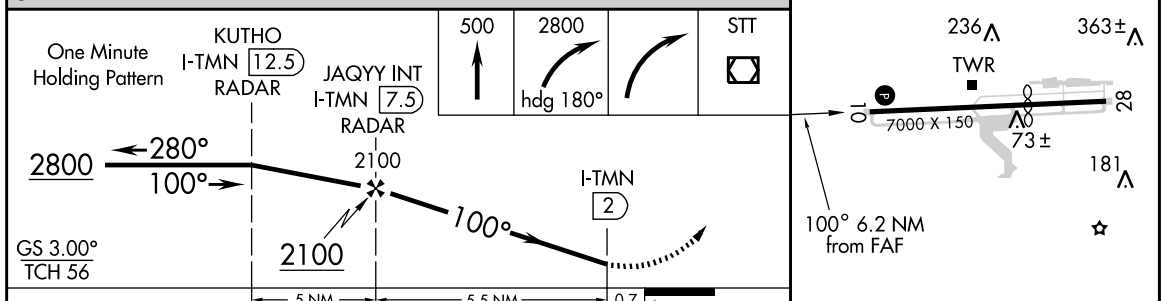
Procedure not authorized when control tower closed.
 Circling not authorized north of Runway 10-28.
 Circling not authorized at night.

MISSED APPROACH: Climb to 500 then climbing right turn to 2800 via heading 180° then right turn direct STT VOR/DME and hold.

ATIS 124.0	SAN JUAN CENTER 128.65 279.6	ST. THOMAS TOWER★ 118.8 (CTAF) 0 257.6 118.1 (NORTH OF ISLAND)	GND CON 121.9	UNICOM 122.95
----------------------	--	---	-------------------------	-------------------------



CAUTION: Pilots may encounter false illusory indications during night approaches to Runway 10 when using outside visual cues for vertical guidance.



CATEGORY	A	B	C	D
	372-1¼ 349 (400-1¼)			
S-ILS 10				
S-LOC 10	620-1 597 (600-1)	620-1½ 597 (600-1½)	620-1¾ 597 (600-1¾)	
CIRCLING	660-1¼ 637 (700-1¼)	660-1¾ 637 (700-1¾)	660-2 637 (700-2)	

ELEV	23	D	TDZE	23	
REIL Rwy 10 MIRL Rwy 10-28					
FAF to MAP 5.5 NM					
Knots	60	90	120	150	180
Min:Sec	5:30	3:40	2:45	2:12	1:50

CHARLOTTE AMALIE, ST. THOMAS, VIRGIN ISLANDS
 Amdt 1A 11181

CHARLOTTE AMALIE/ CYRIL E KING (STT)(TIST)
 18°20'N - 64°58'W
ILS RWY 10

Figure 340. ILS RWY 10 (STT) (TIST).