

ST. AUGUSTINE, FLORIDA

AL-692 (FAA)

# RNAV (GPS) RWY 13

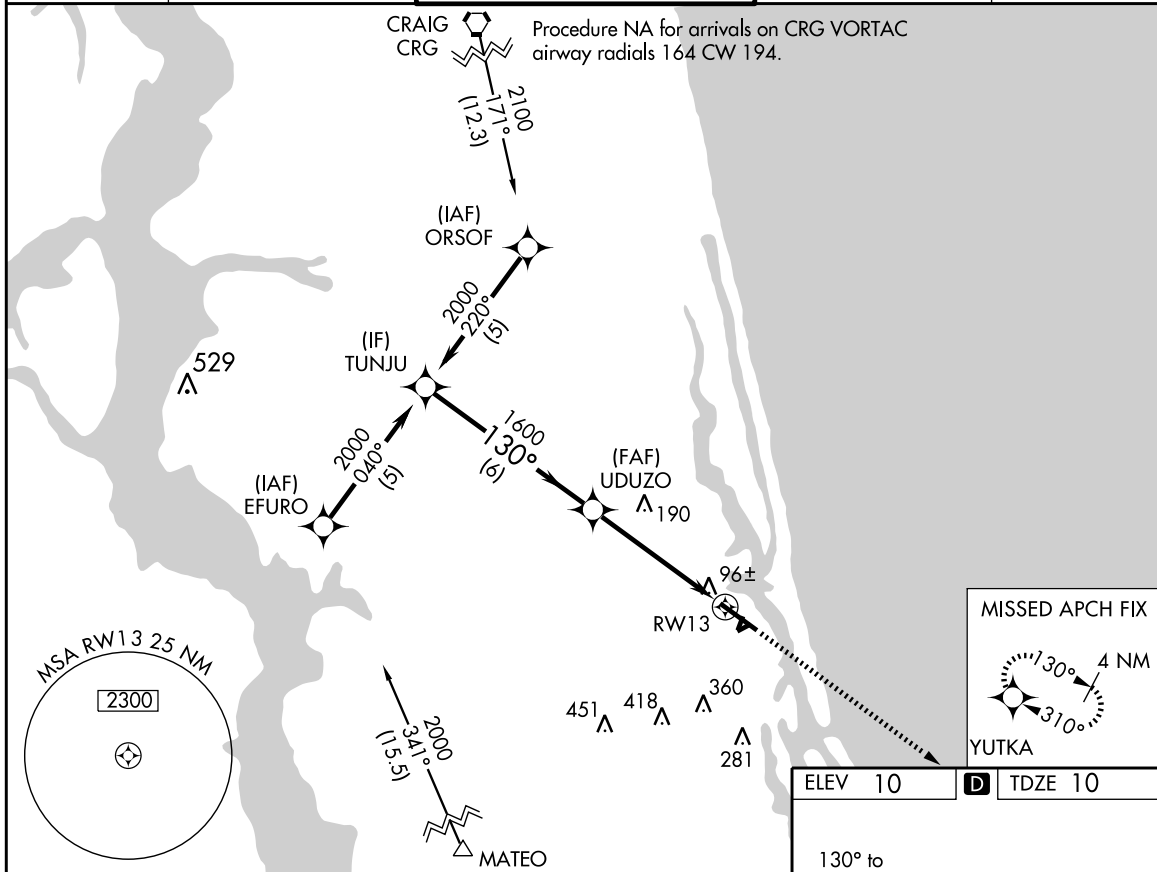
ST. AUGUSTINE / NORTHEAST FLORIDA RGNL (SGJ)

WAAS CH <b>77711</b> <b>W13A</b>	APP CRS <b>130°</b>	Rwy Idg <b>6144</b> TDZE <b>10</b> Apt Elev <b>10</b>
--	------------------------	---

**⚠** Baro-VNAV NA when using Jacksonville NAS/Towers Field altimeter setting. For uncompensated Baro-VNAV systems, LNAV/VNAV NA below -15°C (5°F) or above 48°C (118°F). DME/DME RNP-0.3 NA. Visibility reduction by helicopters NA. When local altimeter setting not received, use Jacksonville NAS/Towers Field altimeter setting and increase all DA 57 feet and all MDA 60 feet, increase LPV and LNAV/VNAV all Cats. visibility ¼ mile.

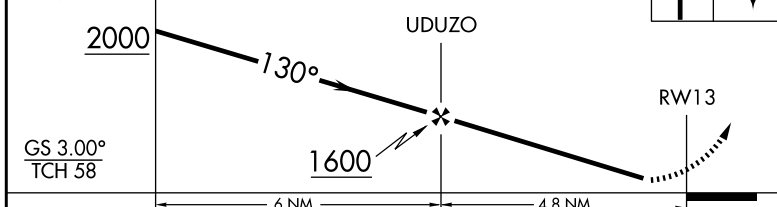
**MISSED APPROACH:**  
Climb to 2000 direct YUTKA and hold.

ATIS <b>119.625</b>	JACKSONVILLE APP CON <b>120.75 308.4</b>	ST AUGUSTINE TOWER ★ <b>127.625 (CTAF) 269.475</b>	GND CON <b>121.175 251.125</b>	UNICOM <b>122.95</b>
------------------------	---	---	-----------------------------------	-------------------------

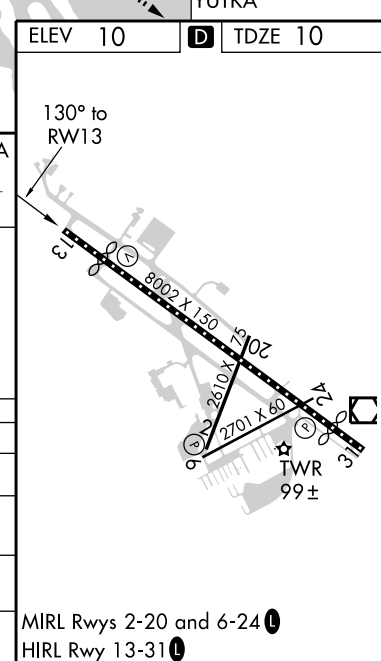


Procedure Turn NA  
TUNJU  
2000  
GS 3.00°  
TCH 58

VGSI and RNAV glidepath not coincident (VGSI Angle 3.00/TCH 44).  
2000 YUTKA



CATEGORY	A	B	C	D
LPV DA	357-1¼		347 (400-1¼)	
LNAV/VNAV DA	391-1¼		381 (400-1¼)	
LNAV MDA	440-1	430 (500-1)	440-1¼ 430 (500-1¼)	440-1½ 430 (500-1½)
CIRCLING	460-1	450 (500-1)	460-1½ 450 (500-1½)	580-2 570 (600-2)



ST. AUGUSTINE, FLORIDA  
Orig 11349

ST. AUGUSTINE / NORTHEAST FLORIDA RGNL (SGJ)  
29°58'N-81°20'W

# RNAV (GPS) RWY 13

Figure 342. RNAV (GPS) RWY 13 (SGJ).