

Appendix 2

ROCHESTER, NEW YORK

AL-351 (FAA)

LOC I-ROC 109.5	APP CRS 278°	Rwy Idg 5801
		TDZE 548
		Apt Elev 559

ILS or LOC RWY 28

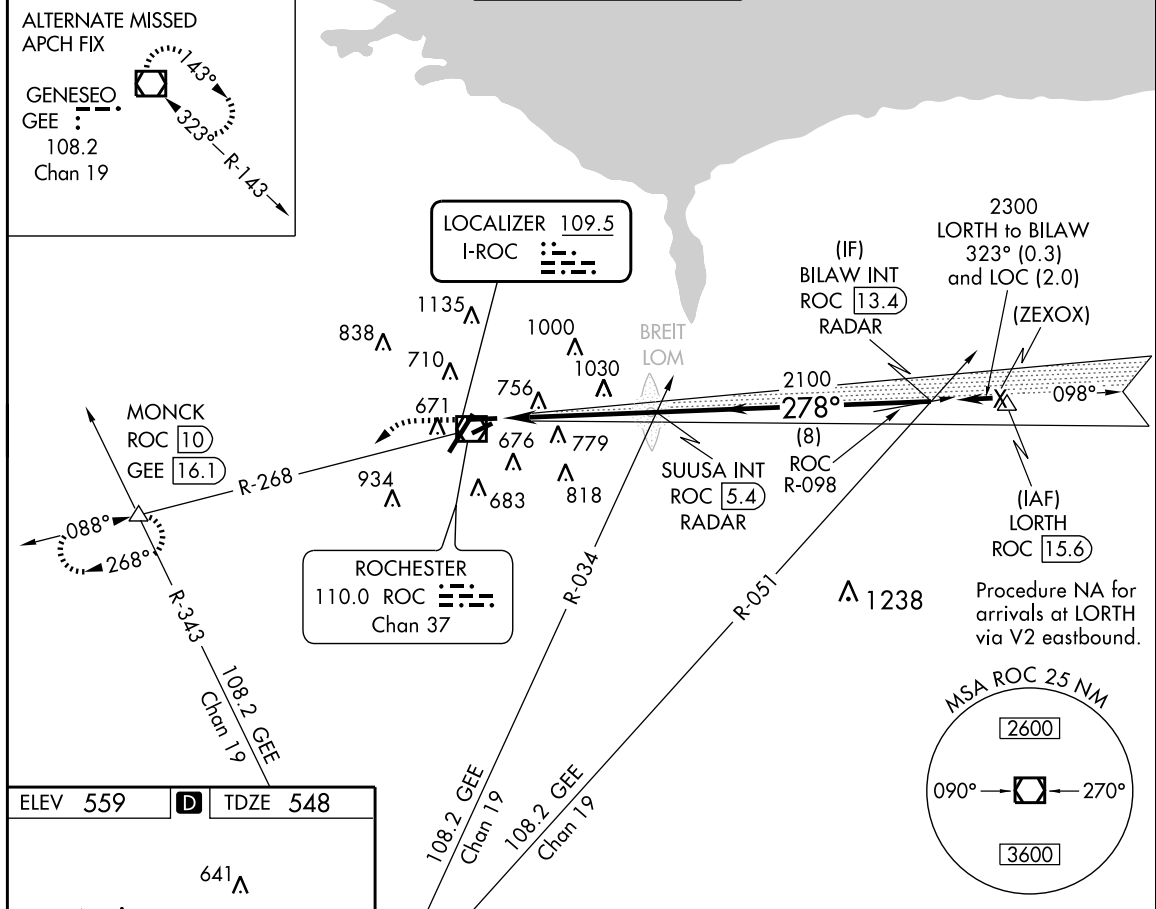
ROCHESTER / GREATER ROCHESTER INTL (ROC)

▼ Inoperative table does not apply to S-ILS 28 all Cats and S-LOC 28 Cats A and B.
▲ Visibility reduction by helicopters NA.
 Multiple unshielded lights in final approach area.

MALSR

MISSED APPROACH: Climb to 2000 then climbing left turn to 3000 via heading 230° and ROC VOR/DME R-268 to MONCK INT/ROC 10 DME and hold.

ATIS 124.825	ROCHESTER APP CON 119.55 269.6	ROCHESTER TOWER 118.3 254.3	GND CON 121.7	CLNC DEL 118.8 387.0
------------------------	--	---------------------------------------	-------------------------	--------------------------------

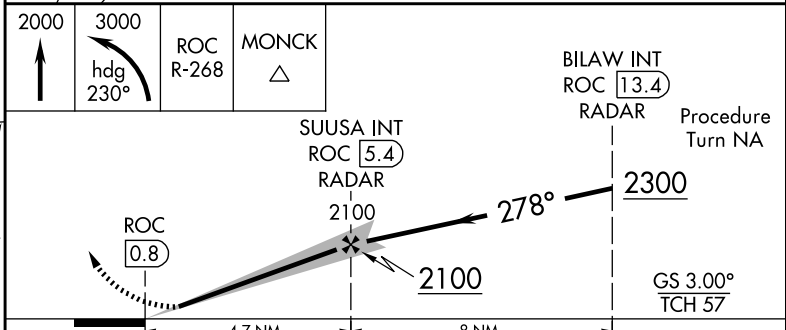


ELEV 559 TDZE 548

Diagram details: Shows the runway (RWY 4) and taxiway (TAXIWAY 25) area. Key features include:

- Runway 4:** 4000 X 100 feet.
- TDZ/CL Rwy 4:** 4001 X 150 feet.
- MIRL Rwy 7-25:** 4000 X 100 feet.
- HIRL Rws 10-28 and 4-22:** 4000 X 100 feet.
- TWR 697:** 278° 4.7 NM from FAF.
- Obstacles:** 641, 655, 643, 611, 628, 647, 617.

TDZ/CL Rwy 4	REIL Rws 7, 10 and 25	MIRL Rwy 7-25	HIRL Rws 10-28 and 4-22		
FAF to MAP 4.7 NM					
Knots	60	90	120	150	180
Min:Sec	4:42	3:08	2:21	1:53	1:34



CATEGORY	A	B	C	D
S-ILS 28	798/50 250 (300-1)			
S-LOC 28	1280/50	732 (800-1)	1280-1½ 732 (800-1½)	1280-1¾ 732 (800-1¾)
CIRCLING	1280-1	721 (800-1)	1280-2 721 (800-2)	1280-2¼ 721 (800-2¼)

ROCHESTER, NEW YORK
Amdt 30A 12040

ROCHESTER / GREATER ROCHESTER INTL (ROC)
43°07'N-77°40'W
ILS or LOC RWY 28

Figure 360. ILS or LOC RWY 28 (ROC).